

TASKMASTER[®]**TOOLS**
from **ILSCO**



Model: TM-12U1000

Instruction manual

Read and understand all of the instructions and safety information in this manual before operating or servicing this tool.

TASKMASTER TOOLS
4730 Madison Road
Cincinnati OH 45227
www.ilsco.com

Phone:
800-776-9775
513-533-6200

Table of Contents

Warranty and Servicing.....	3
Safety Symbols.....	3
Safety.....	4
Technical Specifications.....	5
Identification.....	6
Operating Instructions.....	7
Tool Maintenance.....	8
Head Assembly Breakdown and Parts List.....	9
Tool Parts Breakdown.....	10
Parts List.....	11

Thank you...

for buying a TASKMASTER TOOL. Our mission is to bring product innovation and exceptional customer service to the marketplace. This tool line is reliable, dependable, and durable for our customer's needs.

Please read this instruction manual carefully before using the product. If you have any questions about our product please reach out to our customer service department (see back cover). No part of the contents of this manual may be reproduced, transmitted or circulated in any form or by any means without the prior written authorization of TASKMASTER TOOLS.

TASKMASTER^{TOOLS}
from **ILSCO**

WARRANTY AND SERVICING

TASKMASTER PRO 5-Year Tool Service Protection Program

Introducing the industry's best service & support program for all your ILSCO hydraulic crimping and cutting tools. All ILSCO tool buyers are automatically registered in the UtilPro Service Protection Program and will receive free tool repairs for defects in material or workmanship on their tool(s) for five years after their original purchase date. (Excludes abuse, non-intended use, tampered with or normal wear and tear.)

TASKMASTER PRO Tool 5-Day Repair Pledge

If your tool(s) need repair at any time within five years of your original purchase date, our TASKMASTER PRO service network will repair your registered tools within five business days of receipt.

TASKMASTER PRO Tool Loaner Program

If you need a replacement tool during any repair, our TASKMASTER PRO network can typically provide a comparable loaner tool to registered tool owners while your tool is being repaired.

FREE Tool Reconditioning

Your first reconditioning is on us!

To Find a TASKMASTER PRO Service Partner

Call ILSCO for assistance in solving tool performance issues or for any of your service needs. ILSCO tool owners will be offered options to solve any tool replacement, parts or repair issues.

Call 513-533-6200 or 800-776-9775

Monday to Friday

8:00AM to 5:00PM Eastern Time (ET)

SAFETY SYMBOLS



Attention!
Risk of
cutting injury



Never use
with unlocked
workhead



Read the operating
instructions
before use



Wear protective
goggles



Electric Shock
Hazard- use
proper protective
equipment



Do not dispose
of product.
Please recycle

SAFETY

Read all safety warnings, instructions provided with this tool. Failure to follow all instructions listed below may result in electric shock, fire and/or serious injury. Save all warnings and instructions for future reference.

WORK AREA SAFETY

- Keep work area clean and well lit. Cluttered or dark areas invite accidents.
- Keep children and bystanders away while operating a hydraulic tool. Distractions can cause you to lose control.

PERSONAL SAFETY

- Stay alert, watch what you are doing and use common sense when operating a hydraulic tool. Do not use a hydraulic tool while you are tired or under the influence of drugs, alcohol, or medication. A moment of inattention while using hydraulic tools may result in serious personal injury.
- Use personal protective equipment. Always wear eye protection. Protective equipment such as rubber gloves, non-skid safety shoes, hard hat or hearing protection used for appropriate conditions will reduce personal injuries.
- Do not overreach. Keep proper footing and balance at all times. This enables better control of the tool in unexpected situations.
- Do not let familiarity gained from frequent use of hydraulic tools allow you to become complacent and ignore tool safety principles. A careless action can cause severe injury within a fraction of a second.

SERVICE

- Have your tool serviced by a qualified repair person using only identical replacement parts. This will ensure that the safety of the hydraulic tool is maintained.

TECHNICAL SPECIFICATIONS

Force developed:	12 tons
Jaw Opening:	1.65 in.
Hydraulic oil:	Shell Tellus S2 V 15
Dimensions:	23 in. x 8.75 in. x 3 in. (L x W x H)
Weight:	14.5 lbs.

Crimp Capacity

CU conductor: 1000 kcmil - #8 sol/str

AL conductor: 750 kcmil - #8 str



IDENTIFICATION



- ① Die release buttons
- ② Ram
- ③ Stationary handle
- ④ Pump handle
- ⑤ Release button
- ⑥ Serial number

NOTE: Includes molded carrying case.

OPERATING INSTRUCTIONS

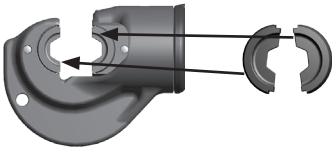
Be sure to read instructions carefully, wear safety goggles, and keep fingers away from cutting head.

ADVANCING & RETRACTING

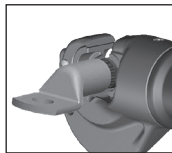
1. To advance the tool, lift and lower the pump handle.
2. To retract the tool, twist pump handle completely, then push handles together until ram is fully retracted.

CRIMPING

1. Make sure the ram is fully retracted.
2. Insert dies by pressing die release buttons and sliding die into ram, then releasing the buttons until the die clicks into place.



3. Place the connector between the dies.
4. Advance the ram by lifting and lowering the pump handle so that the connector is held between the dies and insert conductor into the terminal.



5. Advance the tool until the compression is completed. You will know that compression is completed by the pop when the tool hits full pressure, and the pump handle giving less resistance.
6. Retract the tool by twisting the pump handle completely, then pushing handles together until ram is fully retracted.
7. Remove dies when crimp is complete by pressing die release buttons.

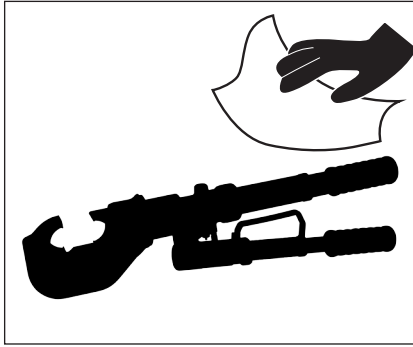
NOTE: Your tool is equipped with a safety bypass. When maximum pressure is achieved, you will hear a pop.

TOOL MAINTENANCE

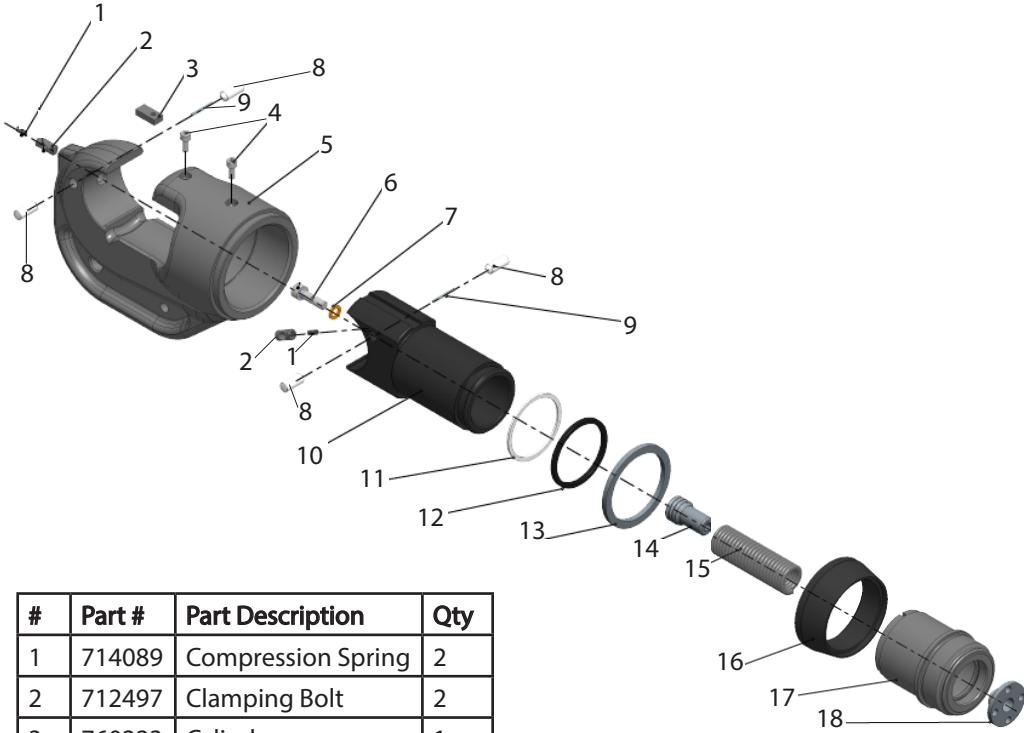
Daily maintenance:

- After each crimping cycle wipe the crimping head jaws free of metal shavings.
- Wipe down all steel parts with WD-40.
- Store the tool in a non-humid environment.

The tool should provide many years of service when given the proper maintenance and care. Should you experience any difficulty with the operation and maintenance of this tool, contact our customer service department (see back cover).



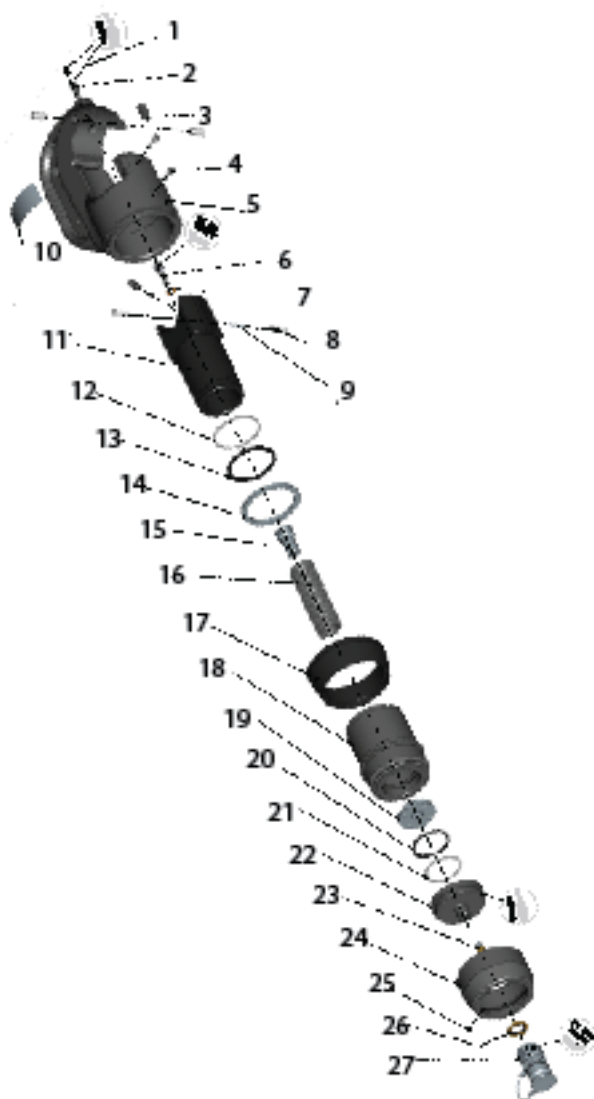
HEAD ASSEMBLY BREAKDOWN AND PARTS LIST



#	Part #	Part Description	Qty
1	714089	Compression Spring	2
2	712497	Clamping Bolt	2
3	760223	Cylinder	1
4	103521	Screw	2
5	715221	C-Head	1
6	714050	Screw	1
7	710973	Seal Disc	1
8	712496	Unlocking Bolt	4
9	101595	Needle Roller	2
10	715222	Piston	1

#	Part #	Part Description	Qty
11	715242	Support Ring	1
12	714820	Seal	1
13	760404	Guide Ring	1
14	714546	Spring Holder	1
15	715225	Tension Spring	1
16	715226	Cover Cap	1
17	715223	Cylinder	1
18	714599	Spring Holder	1

TOOL PARTS BREAKDOWN



PARTS LIST

#	Part Number	Part Description	Qty
1	714089	COMPRESSION SPRING	1
2	712497	CLAMPING BOLT	2
3	760223	GUIDANCE	1
4	103521	CAP SCREW	2
5	715221	C-FORK	1
6	714050	CAP SCREW	1
7	710973	SEAL DISC	1
8	712496	UNLOCKING BOLT	4
9	101595	NEEDLE ROLLER	2
10	706858	TYP PLATE	1
11	715222	PISTON	1
12	715242	SUPPORT RING	1
13	714820	FOUR-LIPS SEAL	1
14	760404	GUIDE RING	1
15	714546	PENHOLDER	1
16	715225	TENSION SPRING	1
17	715226	COVER CAP	1
18	715223	CYLINDER	1
19	714599	PENHOLDER	1
20	712802	O-RING SEAL	1
21	712803	SUPPORT RING	1
22	712801	ADAPTOR	1
23	706979	OIL SCREEN	1
24	715224	CAP NUT	1
25	203703	GRUB SCREW	1
26	711211	SCREW SEAL	1
27	102986	NIPPLE CPL	1

TASKMASTER[®] *TOOLS*

from **ILSCO**[®]

Date: 03/18 Version 2

TASKMASTER PRO
4730 Madison Rd.
Cincinnati, OH 45227

Phone: 800-776-9775
513-533-6200

www.ilsco.com

Service: