



Model: UM-4PT

Instruction manual

Read and understand all of the instructions and safety information in this manual before operating or servicing this tool.

UTILCO Lineman Tools
4730 Madison Road
Cincinnati OH 45227
www.utilco.com

Phone:
800-776-9775
513-533-6200

Table of Contents

Warranty and Servicing.....	3
Safety Symbols.....	3
Safety.....	4
Technical Specifications.....	5
Identification.....	6
Operating Instructions.....	7-8
Head Assembly Breakdown and Parts List.....	9
Tool Parts Breakdown.....	10
Parts List.....	11
Tool Maintenance.....	12

Thank you...

for buying a UTILCO Lineman Tool. Our mission is to bring product innovation and exceptional customer service to the marketplace. This tool line is reliable, dependable, and durable for our customer's needs.

Please read this instruction manual carefully before using the product. If you have any questions about our product please reach out to our customer service department (see back cover). No part of the contents of this manual may be reproduced, transmitted or circulated in any form or by any means without the prior written authorization of UTILCO Lineman Tools.



WARRANTY AND SERVICING

UtilPro™ 5-Year Tool Service Protection Program

Introducing the industry's best service & support program for all your UTILCO hydraulic crimping and cutting tools. All UTILCO tool buyers are automatically registered in the UtilPro Service Protection Program and will receive free tool repairs for defects in material or workmanship on their tool(s) for five years after their original purchase date. (Excludes abuse, non-intended use, tampered with or normal wear and tear.)

UtilPro Tool 5-Day Repair Pledge

If your tool(s) need repair at any time within five years of your original purchase date, our UtilPro service network will repair your registered tools within five business days of receipt.

UtilPro Tool Loaner Program

If you need a replacement tool during any repair, our UtilPro network can typically provide a comparable loaner tool to registered tool owners while your tool is being repaired.

FREE Tool Reconditioning

Your first reconditioning is on us!

To Find a UtilPro Service Partner

Call UTILCO for assistance in solving tool performance issues or for any of your service needs. UTILCO tool owners will be offered options to solve any tool replacement, parts or repair issues.

Call 513-533-6200 or 800-776-9775
Monday to Friday
8:00AM to 5:00PM Eastern Time (ET)

SAFETY SYMBOLS



Attention!
Risk of
cutting injury



Never use
with unlocked
workhead



Read the operating
instructions
before use



Wear protective
goggles



Electric Shock
Hazard - use
proper protective
equipment



Do not dispose
of product.
Please recycle

SAFETY

Read all safety warnings, instructions provided with this tool. Failure to follow all instructions listed below may result in electric shock, fire and/or serious injury. Save all warnings and instructions for future reference.

WORK AREA SAFETY

- Keep work area clean and well lit. Cluttered or dark areas invite accidents.
- Keep children and bystanders away while operating a hydraulic tool. Distractions can cause you to lose control.

PERSONAL SAFETY

- Stay alert, watch what you are doing and use common sense when operating a hydraulic tool. Do not use a hydraulic tool while you are tired or under the influence of drugs, alcohol, or medication. A moment of inattention while using hydraulic tools may result in serious personal injury.
- Use personal protective equipment. Always wear eye protection. Protective equipment such as rubber gloves, non-skid safety shoes, hard hat or hearing protection used for appropriate conditions will reduce personal injuries.
- Do not overreach. Keep proper footing and balance at all times. This enables better control of the tool in unexpected situations.
- Do not let familiarity gained from frequent use of hydraulic tools allow you to become complacent and ignore tool safety principles. A careless action can cause severe injury within a fraction of a second.

SERVICE

- Have your tool serviced by a qualified repair person using only identical replacement parts. This will ensure that the safety of the hydraulic tool is maintained.

TECHNICAL SPECIFICATIONS

Force developed:	6 tons
Jaw Opening:	1.55 in.
Hydraulic oil:	Shell Tellus S2 V 15
Dimensions:	23.7 in. x 2.5 in. x 6 in. (L x W x H)
Weight:	13.3 lbs.
Crimp Capacity - Lugs	
CU code wire:	1000 kcmil - #8
AL code wire:	750 kcmil - #8
Crimp Capacity - Splices	
CU code wire:	1000 kcmil - #8
AL code wire:	750 kcmil - #8



IDENTIFICATION



- ① Head locking pin
- ② Serial number
- ③ Stationary handle
- ④ Pump handle
- ⑤ Release button
- ⑥ Indenter tips

NOTE: Includes durable plastic carrying case.

OPERATING INSTRUCTIONS

Be sure to read instructions carefully, wear safety goggles, and keep fingers away from cutting head.

ADVANCING & RETRACTING

1. To advance the tool, lift and lower the pump handle.
2. To retract the tool, twist pump handle completely, then push handles together until ram is fully retracted.

CRIMPING

1. Retract the ram fully by pressing the release button.
2. Turn the locking pin to unlock, then pull pin to release latch.



3. Open latch, and place lug in head.



CRIMPING (cont'd)

4. Close latch and lock pin back into place, then cycle the tool to crimp the lug.

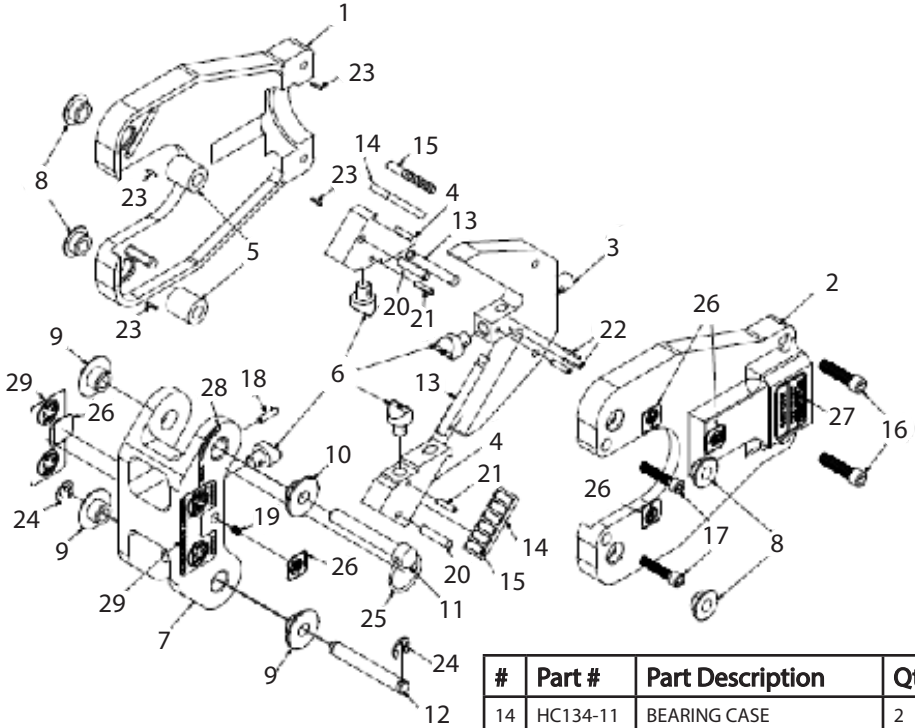


CAUTION: Ensure that the lug is placed securely, in the center, against the stationary tip on the latch end of the head. Before applying full pressure, make sure that all 4 indenter tips are contacting the lug, or damage will occur to tool.

Tip: Slowly advance the tool to correctly place lug in indenter tips.



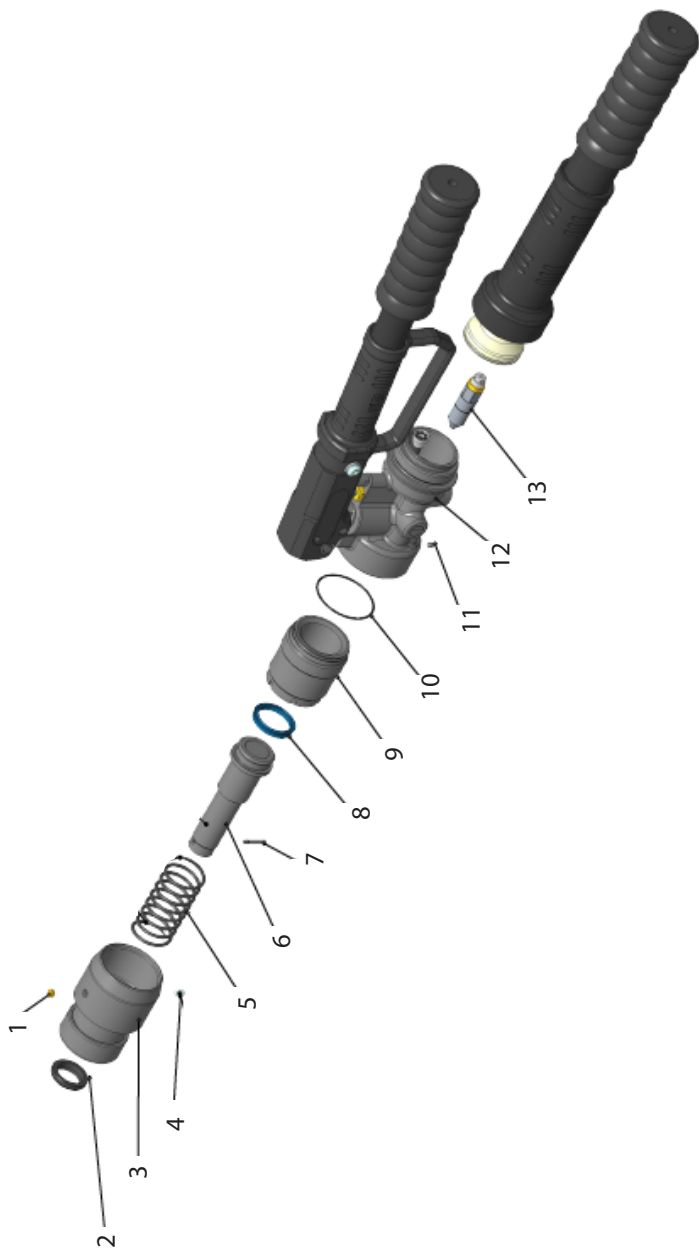
HEAD ASSEMBLY BREAKDOWN AND PARTS LIST



#	Part #	Part Description	Qty
1	HC134-16-11	LEFT HOUSING	1
2	HC134-17-11	RIGHT HOUSING	1
3	HC134-20	SLIDE	1
4	HC134-19	JAW	2
5	HC134-12	ROLL BUSHING	2
6	HC134U-1	INDENTER	4
7	HC134-3-11	HINGE	1
8	HC134-13	BODY BUSHING	4
9	HC134-7A	HINGE BUSHING	3
10	HC134-7B	HINGE BUSHING	1
11	HC134-8	LOCK PIN	1
12	HC134-9	HINGE PIN	1
13	HC134-10	PIN	2

#	Part #	Part Description	Qty
14	HC134-11	BEARING CASE	2
15	6-1003	DOWEL PIN	12
16	1-1079	SOCKET HEAD CAP SCREW	2
17	1-434	SOCKET HEAD CAP SCREW	2
18	4-1689	POSI-HEX PLUNGER	1
19	1-1017	FLAT POINT SET SCREW	1
20	6-1139	DOWEL PIN	2
21	6-1023	SPRING PIN	3
22	6-1328	COILED PIN	2
23	6-1033	SPRING PIN	4
24	4-1058	E-RING	2
25	4-1325	KEY RING	1
26	PH102-WL	WARNING LABEL	8
27	HC134-CL	CAUTION LABEL	1
28	HC134-LL	LOCK LABEL	1
29	HC134-PL	PLACEMENT LABEL	2

TOOL PARTS BREAKDOWN



PARTS LIST

#	Part #	Part Description	Qty
1	705806	FILTER DISC	1
2	715496	SCRAPER	1
3	715544	CAP NUT	1
4	702135	GRUB SCREW	1
5	715549	COMPRESSION SPRING	1
6	715543	PISTON	1
7	715546	LOCKING PIN	1

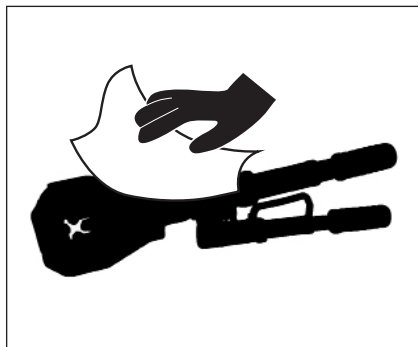
#	Part #	Part Description	Qty
8	715300	PISTON RING	1
9	715547	CYLINDER	1
10	103991	O-RING SEAL	1
11	104050	GRUB SCREW	1
12	E715167	HYDRAULIC TOOL MNT	1
13	713796	PRESSURE CONTROL VALVE	1

TOOL MAINTENANCE

Daily maintenance:

- After each crimping cycle wipe the crimping head jaws free of metal shavings.
- Wipe down all steel parts with WD-40.
- Store the tool in a non-humid environment.

The tool should provide many years of service when given the proper maintenance and care. Should you experience any difficulty with the operation and maintenance of this tool, contact our customer service department (see back cover).





Date: 02/18 Version 1

UTILCO Lineman Tools
4730 Madison Rd.
Cincinnati, OH 45227

Phone: 800-776-9775
513-533-6200

www.utilco.com

Service: