

Operating Instruction Manual For FP-1 Hydraulic Foot Pump with Parts List



4730 Madison Road
Cincinnati, OH 45227
800.776.9775 | www.ilsco.com

FP-3 SPECIFICATIONS

SPECIFICATIONS

| | |
|---------------|----------------------|
| Weight | 25 lbs. |
| Length | 28" |
| Oil Reservoir | 44 cu/in fluid |
| 1st Stage | .75 cu/in per stroke |
| 2nd Stage | .14 cu/in per stroke |

10,000 psi HYDRAULIC FOOT PUMP

- **Two-Stage Pump Piston for Rapid Advance**
- **External Pressure Adjustment from 4,000-10,000 psi**
- **Can be Operated in any Position**
- **3/8" Standard Screw Type Female Coupler**
- **Knob Type Release Valve**



READ

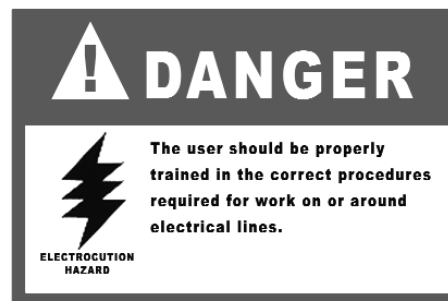
Instruction Manual
and Product Decals
before use.



Keep Fingers Out Of Pinch Areas
Always Wear Safety Glasses



Secure Latch Before Operating
Failure To Secure Latch can
Result In Severe Tool Damage
And Personal Injury.



The User Should Be Properly
Trained in the Correct
Procedures Required For Work
Around Electrical Lines.

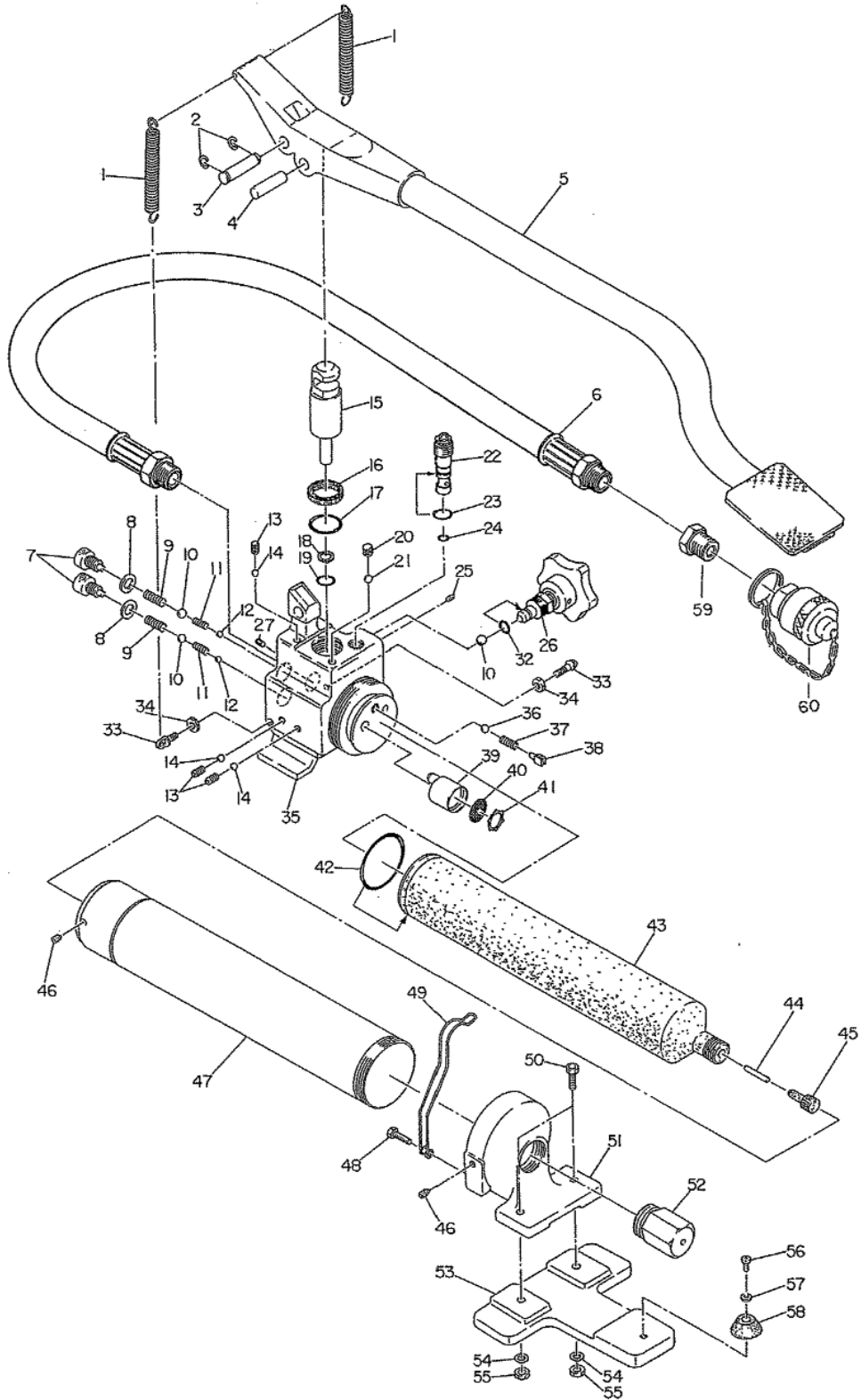


Do Not Operate Without Dies

OPERATING INSTRUCTIONS FOR FP-3

1. Connect all couplers on tool, hose, and pump. Make sure all couplers are secure before operating.
2. Rotate control valve on the pump to the “Close” position; pump handle to operate.
3. All pumps feature an external bypass cartridge that will dump the oil back into the reservoir at a predetermined pressure; factory set at 10,000 psi. When this bypass is reached, the tool should be released and is ready to begin the next cycle.
4. To release the pressure, rotate the control valve to the “OPEN” position and the tool ram will retract.
5. These pumps were designed to provide a manually operated pumping source in places where electric power was not available. The foot pump action allows the operator’s hands to be free for controlling the tool and related job applications.
6. An external bypass pressure adjustment valve is easily accessible in event other pressures are required to operate tools. An in-line gauge should be used in conjunction with a tool to properly set the output pressure.
7. The pump base can be set on any flat surface to provide pump stability. The foot handle should be latched in a closed position for storage. The internal fluid reservoir should be checked periodically to assure proper oil level. Remove end cap and replenish oil that has been lost from the connecting and unconnecting of various tools heads. Always use the same fluid type when replenishing hydraulic fluid. Never mix different fluids since incompatibility of fluids may cause the different fluids to congeal. Always change out the fluid completely when in doubt.
8. The FP-3 pump has a bypass relief system incorporated which will dump the fluid when the predetermined pressure (10,000psi) is reached.
9. These pumps can be operated in any position because of the unique internal fluid reservoir.

OPERATING INSTRUCTIONS FOR FP-3



MODEL FP-3 PARTS LIST

| NO. | DESCRIPTION | CODE | QTY. |
|-----|---------------------------|----------|------|
| 1 | Spring (219) | 13S-02 | 2 |
| 2 | CE-10 Snap Ring | 40-16 | 2 |
| 3 | Pin (50) | 700S-01 | 1 |
| 4 | Pin (51) | 700S-02 | 1 |
| 5 | Foot Pedal Ass'y | F700A-06 | 1 |
| 6 | Hose 2M | 700S-29 | 1 |
| 7 | Retaining Screw | F700A-07 | 2 |
| 8 | Copper Gasket (7) | E3-68 | 2 |
| 9 | Spring (67) | 85-39 | 2 |
| 10 | 9/32" Ball | 16-40 | 3 |
| 11 | Spring (284) | F700A-08 | 2 |
| 12 | 3/16" Ball | 16-49 | 2 |
| 13 | M6 X 10 Screw (F.P.) | RA-71 | 3 |
| 14 | 5/32" Ball | 22-21 | 3 |
| 15 | Pump Piston | 700S-05 | 1 |
| 16 | P-26 X-Ring | 700S-06 | 1 |
| 17 | P-26 O-Ring | 16-55 | 1 |
| 18 | P-10A Back-Up Ring (B.C.) | RB-66 | 1 |
| 19 | P-10A O-Ring | RB-65 | 1 |
| 20 | M8 X 8 Screw (F.P.) | 700S-23 | 1 |
| 21 | 1/4" Ball | 26-22 | 1 |
| 22 | Bypass Cartridge | 410-36 | 1 |
| 23 | S-9 O-Ring | 410-71 | 1 |
| 24 | P-8 O-Ring (B) | 700S-15 | 1 |
| 25 | M5 X 5 Screw | 300-73 | 1 |
| 26 | Release Knob Ass'y | 700A-03 | 1 |
| 27 | M4 X 6 Screw (C.P.) | 180-04 | 1 |
| 32 | P-5 O-Ring | 5N-35 | 1 |
| 35 | Body @ | F700A-11 | 1 |
| 36 | 7/32" Ball | 16-26 | 1 |
| 37 | Spring (43) | 85-49 | 1 |
| 38 | Valve Screw (8) | 85-50 | 1 |
| 39 | Strainer | 9H-43A | 1 |
| 40 | Filter Screen | 410-73 | 1 |
| 41 | SI-20 Ring | 410-74 | 1 |
| 42 | P-40 O-Ring | 700S-27 | 1 |
| 43 | Oil Reservoir (15) | F700-07 | 1 |
| 44 | Magnet | ROB-25 | 1 |
| 45 | Reservoir Cap | 410-55 | 1 |
| 46 | M6 X 6 Screw (C.P.) | 85-41 | 2 |
| 47 | Reservoir Cover Ass'y | F700A-10 | 1 |
| 48 | M6 X 20 Screw | RF-05 | 1 |
| 49 | Spring (324) | F700-09 | 1 |
| 50 | M6 X 22 Screw | F700-14 | 2 |
| 51 | Support Stand | F700-10 | 1 |
| 52 | End Cap | 700S-331 | 1 |
| 53 | Base (B) | F700-12 | 1 |
| 54 | M6 Lock Washer | 16-02 | 2 |

| NO. | DESCRIPTION | CODE | QTY. |
|-----|-------------------------------|---------|------|
| 55 | M6 Hex. Nut | 16-01 | 2 |
| 56 | M4 X 16 Screw (Ni) | 13S-08 | 1 |
| 57 | M4 Flat Washer | E3-101 | 1 |
| 58 | Rubber Support | 13S-37 | 1 |
| 59 | Adapter 3/8" NPT-M. 3/8" PT-F | 410H-80 | 1 |
| 60 | Male Coupler P.H. Type | RD-12 | 1 |
| | | | |
| | | | |
| | | | |
| | | | |
| | | | |
| | | | |
| | | | |
| | | | |
| | | | |
| | | | |
| | | | |
| | | | |
| | | | |
| | | | |
| | | | |
| | | | |
| | | | |
| | | | |
| | | | |
| | | | |
| | | | |
| | | | |
| | | | |
| | | | |
| | | | |
| | | | |
| | | | |
| | | | |
| | | | |
| | | | |
| | | | |