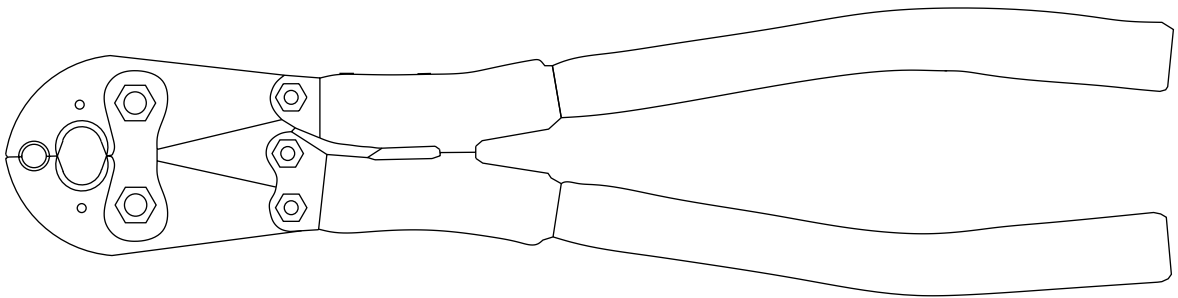


INSTRUCTION MANUAL

ILSCO



ND-58 and ND-60 Mechanical Crimping Tools



Read and understand all of the instructions and safety information in this manual before operating or servicing this tool.

Description

The ND-58 and ND-60 Mechanical Crimping Tools are hand-operated tools that use permanent die grooves and/or insertable W-type dies. They install a full range of connectors including service entrance, splices, terminals, stacking lugs, street light, stirrup, and repair sleeves.

The tools have two permanent die grooves, "O" or "BG" and "D3" for distribution tap connectors. The "D3" groove also serves as a seat for die inserts to install additional connectors. The die inserts snap into a permanent "D3" die holder groove easily with one hand, and are secured with the spring-loaded, positive lock, die retainer buttons.

The tools incorporate an over center toggle action mechanism, allowing for easy crimping operations and field adjustability.

For use on:

- Copper taps from #10 solid to #2/0 stranded
- Aluminum/ACSR taps from #14 solid to #4/0 ACSR
- Stirrups from #6 AWG to #4/0 ACSR
- Copper and aluminum code conductor connectors from #6 AWG to #4/0 stranded
- Overhead full tension deadend, full and non-tension splices and terminals from #10 stranded to #4/0 ACSR
- 5/8" and .840" service entrance sleeves

Safety

Safety is essential in the use and maintenance of IlSCO tools and equipment. This manual and any markings on the tool provide information for avoiding hazards and unsafe practices related to the use of this tool. Observe all of the safety information provided.

Purpose of this Manual

This manual is intended to familiarize all personnel with the safe operation and maintenance procedures for the following IlSCO tools:

ND-58 and ND-60 Mechanical Crimping Tools


Keep this manual available to all personnel.

Replacement manuals are available upon request at no charge.

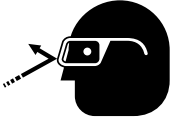
Warranty and Service

IlSCO warrants this tool to the original purchaser for a period of one year from the date of purchase, provided the tool is operated, maintained and used in accordance with IlSCO's written instructions. Ordinary wear and tear, damage from abuse, neglect or alterations are not covered by this warranty. This warranty is null and void if instructions and operating procedures are not followed. Contact IlSCO for all warranty and service issues at 800-776-9775.

IMPORTANT SAFETY INFORMATION

	⚠ WARNING
	Electric shock hazard: This tool is not insulated. Do not use on live circuits. Contact with live circuits can result in severe injury or death.

⚠ WARNING
An incomplete crimp can cause a fire. Use proper connector and cable combinations. Improper combinations can result in an incomplete crimp. Failure to observe this warning can result in severe injury or death.

	⚠ WARNING
	Wear eye protection when operating or servicing this tool. Failure to wear eye protection can result in serious eye injury from flying debris.

⚠ CAUTION
<ul style="list-style-type: none">• This tool is intended for two-handed operation. Maintain a firm grip on both handles when using this tool.• Inspect tool before use. If any parts are worn or damaged, send the tool to an authorized IlSCO service center.• Do not perform any service or maintenance other than as described in this manual.• Do not exceed the rated capacity of this tool. Failure to observe these precautions can result in injury or property damage.

All specifications are nominal and may change as design improvements occur. IlSCO shall not be liable for damages resulting from misapplication or misuse of its products.

KEEP THIS MANUAL

Specifications

Crimp Force Developed 4091 kg (9000 lb)
 Weight (tool only) 2.7 kg (6 lb)

Operation

Die Selection

- For the ND-60, the upper opening is a “BG” die.
- For the ND-58, the upper opening is an “O” die.
- For both the ND-58 and ND-60 tools, the lower opening is a “D₃” die.
- Interchangeable dies may be used in the lower die opening. Dies that may be used include:
 - IlSCO ND series
 - Greenlee KD6 series
 - Burndy W and X series
 - Huskie HT58 series
 - Panduit CD-2001 series
 - Other industry W-type dies

Operation Procedure

1. Select the proper dies for the connector to be crimped.
2. Install dies in jaws making certain that they are properly secured by the spring-loaded, positive lock, die buttons.

IMPORTANT

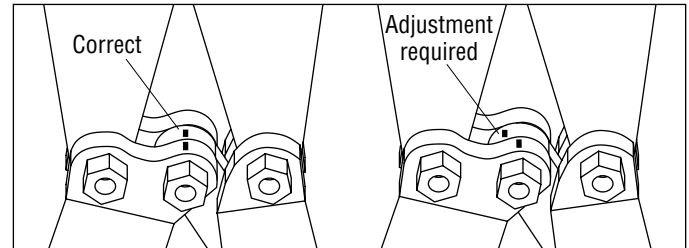
To help minimize hand and arm fatigue and perceived handle force during use, hold the crimping tool with your hands at the end of the handles.

3. Insert conductor into the connector and align the tool and die on the connector. Start in the center for splices and “H” frames, and on the end, nearest the pad, for terminals.
4. Operate the tool by closing, and allowing, the handle butt/stop blocks to touch. Normally a “pop” will be heard as the tool goes over center after the crimp is made.
5. Continue crimping the connector until the correct number of crimps have been completed. Work from the center to the outer edges for splices and “H” frame connectors, alternating sides if possible, for the best compression connection.
6. Reposition tool for next crimp, if required. Unless non-bowing dies are used, it is recommended that the tool be rotated 90° for each adjacent crimp on large splice connections.

Inspection and Adjustment

Check tools periodically for correct adjustment. As with any tool, a slight amount of wear may occur over time. This wear may be corrected by readjusting the tool as follows:

1. Remove any die inserts from the tool and make sure the jaw tips are free of dirt, etc.
2. Open tool and close handles until jaw tips just touch. **DO NOT CLOSE HANDLES COMPLETELY!**
3. Check that the index marks (red grooves) on the toggle link and frame line up.



4. If the marks line up, the tool is in proper adjustment.
5. If the marks do not line up, loosen the locking set screw using a 1/4" (6.4 mm) hex key, and then turn the adjustment screw clockwise or counterclockwise until the marks line up.
6. Tighten the locking set screw securely; the tool is now properly adjusted and ready for use.

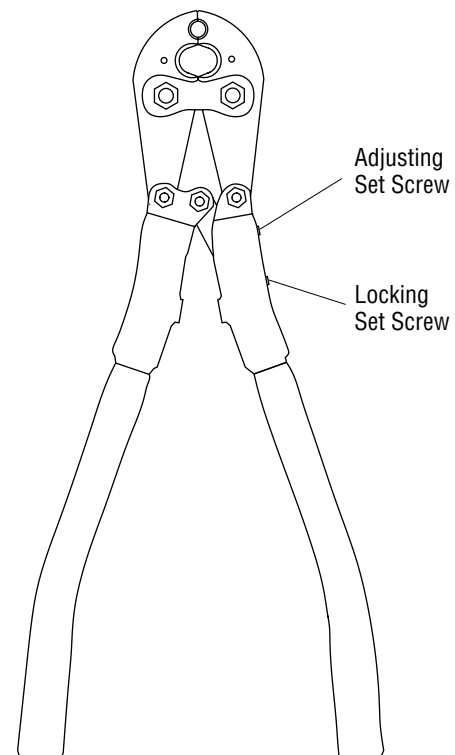
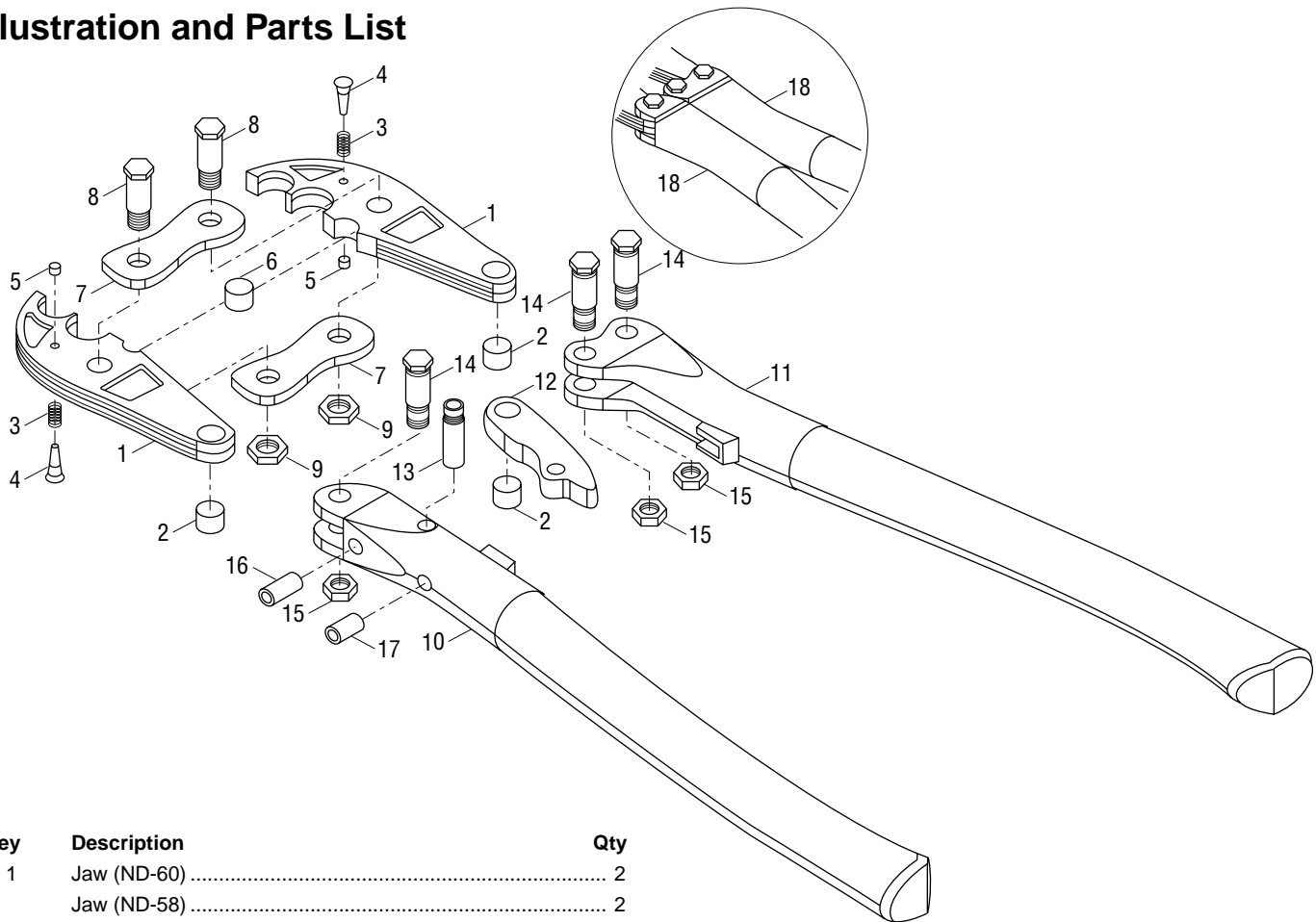


Illustration and Parts List



Key	Description	Qty
1	Jaw (ND-60)	2
	Jaw (ND-58)	2
2	Bushing, oil free	3
3	Spring, \varnothing 6 x L10.8	2
4	Pin, push	2
5	Nut	2
6	Spindle	1
7	Link	2
8	Bolt, shoulder	2
9	Nut	2
10	Head, handle (A)	1
11	Head, handle (B)	1
12	Toggle	1
13	Pin, drive	1
14	Bolt, shoulder	3
15	Nut	3
16	Screw	1
17	Screw	1
18	Tube, shrinkage	2

Repair Kits

500 2793.0	Kit, blade replacement (ND-58); includes two of items 1-5, 7-9, and one of item 6
500 2794.8	Kit, blade replacement (ND-60); includes two of items 1-5, 7-9, and one of item 6
500 2137.0	Kit, plate replacement; includes two of items 7-9
500 2148.6	Kit, handle-adjusting replacement; includes one of items 10, 12-18
500 2149.4	Kit, bolt-handle replacement; includes three of items 2, 14, 15
500 2150.8	Kit, pin-die replacement; includes two of items 3-5
500 2152.4	Kit, handle replacement; includes one of items 11, 18, and two of items 14, 15
500 2151.6	Kit, screw-set; includes one of items 16, 17

ILSCO

U.S. TECHNICAL SUPPORT
1-800-776-9775

IlSCO Corporation • 4730 Madison Road, Cincinnati, Ohio 45227-1426
 Phone (800) 776-9775, (513) 533-6200 • Fax (513) 871-4084
 E-mail: sales@ilsco.com • Web site: <http://www.ilsco.com>