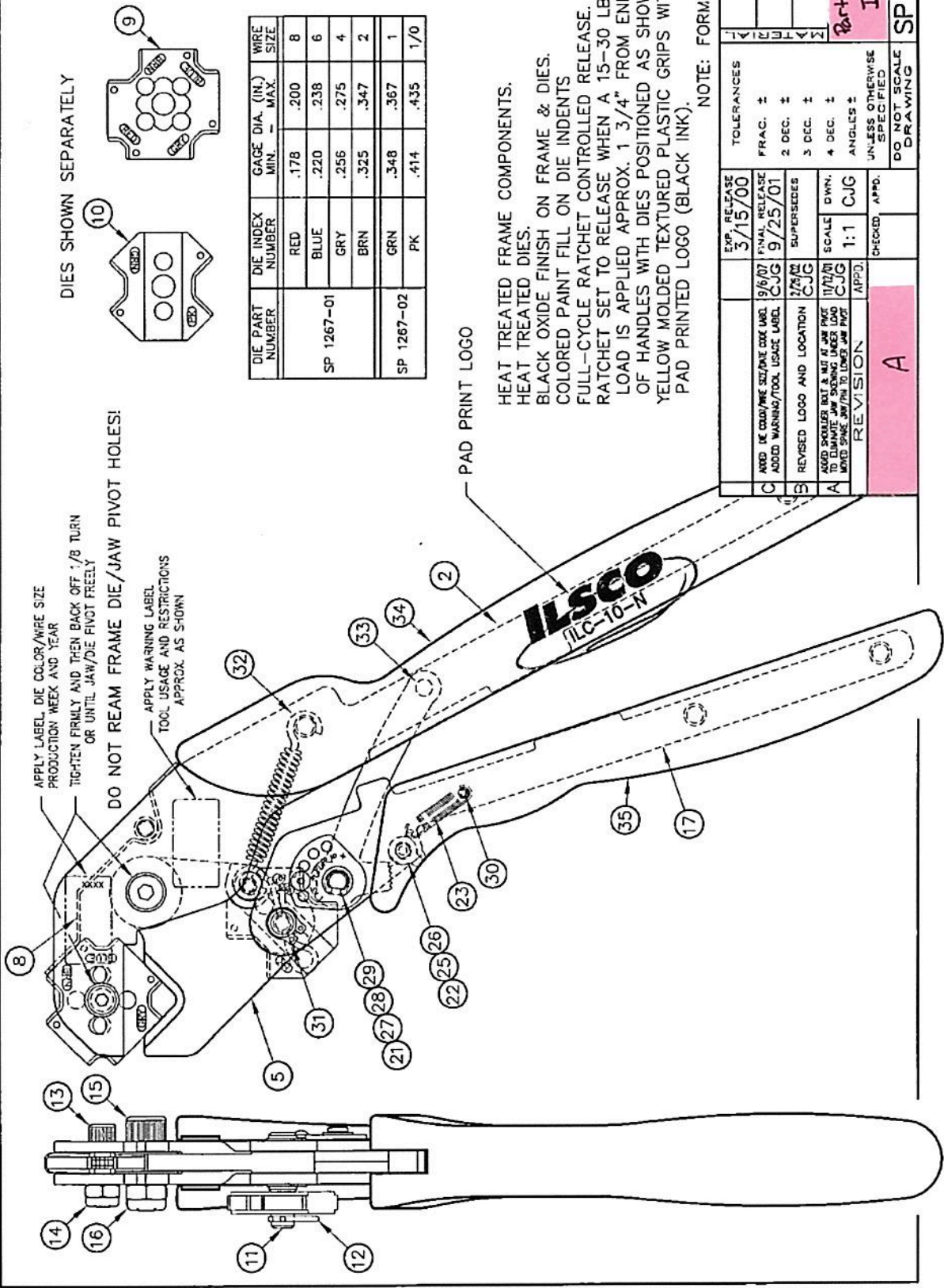


ILC-10-N NEW

Q.C.	ENG.	MFG. ENG.	PROD. CONT.	PRESS	POLISHING	TOOL ROOM	MILLING	ASSEMBLY	CUSTOMER
------	------	-----------	-------------	-------	-----------	-----------	---------	----------	----------



DIE PART NUMBER	DIE INDEX NUMBER	GAGE DIA. (IN.) MIN. - MAX.	WIRE SIZE
SP 1267-01	RED	.178 - .200	8
	BLUE	.220 - .238	6
	GRY	.256 - .275	4
	BRN	.325 - .347	2
SP 1267-02	GRN	.348 - .367	1
	PK	.414 - .435	1/0

C	REVISED LOGO AND LOCATION	17/2/01	CJG	SCALE DWN. 1:1	CJG	UNLESS OTHERWISE SPECIFIED
	ADDED 1/8" SHOULDER BOLT & NUT AT JAW PIVOT TO ELIMINATE JAW SKIPPING UNDER LOAD	17/2/01	CJG	SCALE DWN. 1:1	CJG	
	ADDED 1/8" SHOULDER BOLT & NUT AT JAW PIVOT TO ELIMINATE JAW SKIPPING UNDER LOAD	17/2/01	CJG	SCALE DWN. 1:1	CJG	
	ADDED 1/8" SHOULDER BOLT & NUT AT JAW PIVOT TO ELIMINATE JAW SKIPPING UNDER LOAD	17/2/01	CJG	SCALE DWN. 1:1	CJG	
C	ADDED 1/8" SHOULDER BOLT & NUT AT JAW PIVOT TO ELIMINATE JAW SKIPPING UNDER LOAD	17/2/01	CJG	SCALE DWN. 1:1	CJG	DO NOT SCALE DRAWING
S	REVISED LOGO AND LOCATION	17/2/01	CJG	SCALE DWN. 1:1	CJG	
S	ADDED 1/8" SHOULDER BOLT & NUT AT JAW PIVOT TO ELIMINATE JAW SKIPPING UNDER LOAD	17/2/01	CJG	SCALE DWN. 1:1	CJG	
C	ADDED 1/8" SHOULDER BOLT & NUT AT JAW PIVOT TO ELIMINATE JAW SKIPPING UNDER LOAD	17/2/01	CJG	SCALE DWN. 1:1	CJG	

Part #: ILC-10-N

SP 2000-00 C